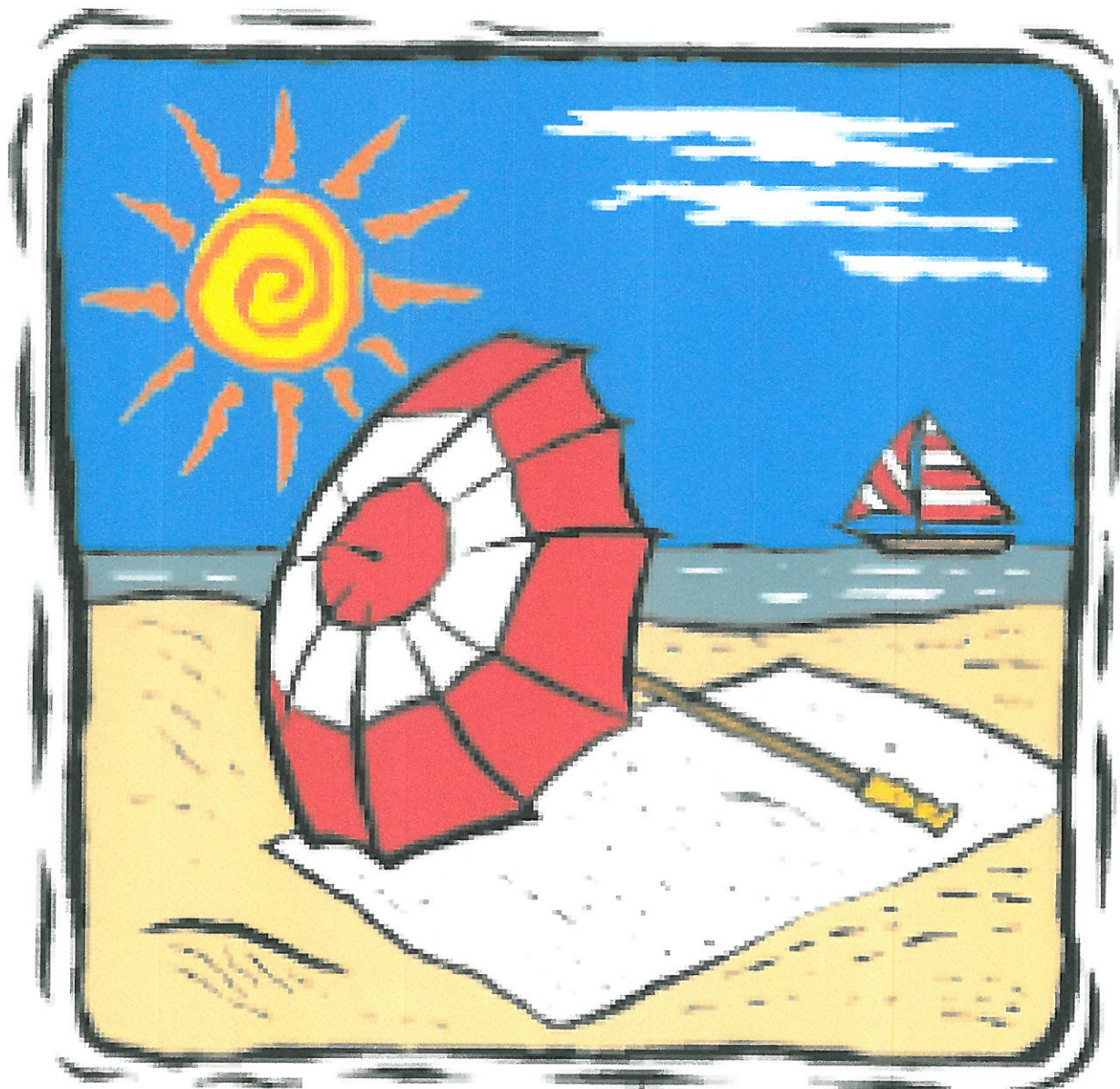


# Stonehedge Beacon

Volume 44, Issue 7

JULY 2017



Stonehedge Residents Inc.- 39820 US 19 N, Tarpon Springs, FL 34689 - Phone 727.934.7917

[www.stonehedgeonthehill.org](http://www.stonehedgeonthehill.org)

to view the Beacon in color

E-mail: [stonehedge3@tampabay.rr.com](mailto:stonehedge3@tampabay.rr.com)

to have Beacon sent to you

**STONEHEDGE RESIDENTS INCORPORATED**

**(S.R.I.) Board of Director Officers 2016 – 2017**

President . . . . .Lois Casey

Vice President. . . .Terry Ellingson

2<sup>nd</sup> Vice President..Tom Tudor

Secretary . . . . .Susan C Elton

Treasurer. . . . .Dale Thomas

**Board of Directors Members**

Lynn Dunstall

Jerry Kinsey

Joyce Lester

Jayne Lucas

**SRI COMMITTEES \***

**Budget & Finance:**

*Dale Thomas: Chairperson*

John Ahearn, Jayne Lucas, Melanie Horaney,

Larry Schweitzer, Tom Tudor

**Rules & Regulations:**

*Lynn Dunstall, Chairperson*

Joanne Ahearn, Jim Bruno, Ken Collier, Terry Ellingson,  
Susan C. Elton, Paul Goldey, Marcia Hughes, Jerry Kinsey,

Dick Scott

**Maintenance, Beautification, Risk Management (Safety):**

*Jayne Lucas, Chairperson*

Ron Curvin, Augie Jesse, Mary Jo Mueller, Donna Kinsey

**Long Range Planning:**

*Terry Ellingson, Chairperson*

John Ahearn, Joe Massoud, Jim O'Keefe, Jim Kolbe, Carol

Spence, Tom Tudor, Venise Ward

**Architectural Committee:**

*Jerry Kinsey, Chairperson*

Joyce Lester, Tom Tudor

**Activities Committee for (SRA):**

**APPEALS COUNCIL of SRI**

*James Bruno, Chairperson:* Larry Anselmino, Gladys

Edwards, Richard Elton, Wendy Mosher, James O'Keefe,

Lou Ann Wicher

**Stonehedge Residents Association**

**(SRA – Stonehedge–ACTIVITIES)**

**Governors:**

Penny Curvin – Chairman

Ron Curvin – Asst. Chairman

Mary Jo Mueller – Governor

Janet Purtee – Secretary

Marcia Hughes – Treasurer

**Members at Large**

Cheryl Bruno

Liz Barth

**Stonehedge Beacon Staff**

Susan Elton . . . . . Editor

Stonehedge Office . . . . . Advertising

Tony Toscano . . . . . Printing

**Beacon Distribution**

The Stonehedge Beacon is published monthly to keep you posted on Park News and Activities.

**Beacon available in color electronically at [stonehedgeonthehill.org](http://stonehedgeonthehill.org).** The Beacon will be available in a box placed at the mailboxes and inside the Clubhouse. If you are unable to pick up your copy of the Beacon please call Roberta Johnson and she will bring you a copy.



## Managers Korner

JULY 2017

Tony Toscano

OK OK I get it – no more April showers bring May flowers, it's more like May drought makes us pout. Then it turned to May rain make June flowers sustain, which soon became May heat burns my feet. Now its June downpours make us stay indoors. No complaints here, just doing a little rhyme time, although the later rains year after year do take their toll on our planting and seasonal planning. But if we must have it either way – Bring on the rain!!!

The abundance of rains has allowed us to save about (wells still off as of 6/26) 3,000,000 gallons of water.

**REMINDER: ONCE OUR WELLS ARE TURNED BACK ON.** If you need help understanding your system – feel free to ask for simple instructions. Staff will be more than willing to offer help. All systems have an OFF mode-(for when it rains 2-3-4-5 days in a row) a MANUAL mode (for when you want to check your system at any time of the day) and simple settings that make it easy to understand and set (if for some reason the system resets).

PS: Change your battery- the battery does not run your system – it only holds the settings for a short time during power outages. During longer power outages, your system may have to be reprogrammed.

We have started some summer projects. The floors of the stage – which were press board have been covered with ¾ inch plywood and carpeted.

We (Shannon) added electrical outlets on the stage for ease of use for the bands. We (Shannon) also added electricity to the front of the stage along with a telephone jack and a USB port for use during monthly meetings and other happenings.

The main clubhouse doors and shuffle court doors have been refitted with new floor saddles. The old ones had a ½ inch lip which was a bit of a trip hazard. Shannon and Ray Casey (#243) took care of this issue. Thank you.

We have some concrete work around the park to do. Some cracked sidewalks and tiles near the pool need work.

General painting touchups in the Clubhouse and probably will repaint the laundry room since it's looking a bit rough. These projects will be done in-house as well.

Also planned is a new design for the front grass (whatever you wanna call it) area in front of the mail room. Some flowering low bushes and colorful stone or shell will make up that area. A portion of the area will be open for display of signs or designs for all the holidays, Valentine's day, Memorial Day, St Patrick's Day Christmas and so on. Again another in-house project.

**Important Scam Note:** Do not randomly call a so called computer expert or accept a call from any computer fix it services. Make sure you have been recommended to one through a reliable source. Some of these fly-by-nighters install a program on your computer that allows them to mirror what you are doing and the sites you visit AS WELL AS the passwords you put in. Obviously, this is WILL open you up for identity theft.

Vacation times are coming up. Manager Tony will be off from late Wed 7/12 and returning Mon 7/26. The office will be open limited hours depending on further Board member volunteering. I say further because as you know the Board positions are all volunteer work. Just a reminder for the time they dedicate to the Park. Thank you.

For those familiar I am going to Tewkesbury MA, Windham NH and hopefully a trip to some part of Wells, ME. We will be visiting my wifes' grandkids 5,12 and 13 yrs old. Hopefully, further investigation of our

Snowbird retirement locations of choice. Not that I am ready to retire but, you never know. With all of you reminding me how much fun it is, makes you think.

**Homes for Sale**

NONE currently listed

For those who are leaving or who have left- have a safe and healthy trip home and we are looking to see all residents back next season.

Thank you for a wonderful and enjoyable time these past bunch of months

Safe travels  
Tony



**SRA NEWS**

Have a wonderful summer and see you in the Fall.



*Thank you*



I want to thank **Deb and Tom Tudor** for the wonderful tribute on Father's Day. Deb gave a moving talk about her father. The Tudor's provided an amazing, delicious breakfast for everyone in attendance. The menu was huge. The breakfast was a welcome get-together for the summer residents to share some laughs and memories. We had a great time.

**Susan and Richard Elton #261**

**PLEASE JOIN US TO CELEBRATE JULY 4, 2017**

**1 P. M. Potluck at the Clubhouse**



A sign up sheet will be on the Board with choices of what to bring. Chicken, coffee, iced-tea and lemonade will be provided.

Residents free, guests \$3

**Contact: Joyce 938-7798**



**FROM THE SRI BOARD**

Lois Casey, Board President

Have a wonderful, safe summer and we'll see you in the Fall.



**HOSPITALIZATIONS:**  
**None reported! Good news.**



### JULY BIRTHDAYS

- 2 - Marianne Pishkur
- 4 - Victor Unruh, Terry W. Ellingson
- 6 - Judith Scott, Elizabeth Barth, Augustine Ayers
- 7 - Edna Guertin, Barbara Hanton, August Jesse
- 8 - Mary Ann Anselmino,  
Peggy Berge, William Welker
- 9 - Sandra McDougall,  
David Schuyler
- 10- Cynthia Booth, Faye Gallandre-Lebhar
- 13 - Melanie Horaney
- 14 - Barbara Smith, Diane Shoman
- 16 - Paul Banks
- 17 - Lorraine LeBeau, William Reiter  
Michael Penrod
- 18 - Donna Kinsey, Ed Pishkur,
- 19 - Virginia Stetkiewicz, Sam Musci,  
George Hicks
- 20 - Joseph Gengalo, Peggy Baker Day
- 21 - Mary Alice Gebo, Joyce Lester, Robert Lavoie
- 22 - Suzanne Richards
- 23 - Jean Johnson
- 27 - Barbara Barron
- 28 - Terry Nicklas
- 30 - Georges Gallandre-Lebhar
- 31 - Raymond Miller

# Happy Anniversary



### JULY ANNIVERSARIES

- 1 - Cal and Lillian Huffman,  
Leonard and Rosalie Kuzmich
- 6 - Ralph and Shannon Herrmann
- 9 - Mary and George Hicks
- 10 - Rick & Deborah Bohnenstiehl
- 11 - Terry and Kay Ellingson  
William & Stephanie Welker
- 12 - Warren & Joan Mrowczynski
- 16 - Paul & Carol Doornbos
- 18 - Dale & Jean Thomas
- 24 - Brenda & Glenn Turley,
- 26 - David & Diane Shoman
- 29 - Penny and Ronald Curvin



**Our condolences to the families and friends of the following Stonehedge residents:**

### JUNE DEATHS:

- Helen St. Pierre #140
- Mario ST. Pierre #140

# LAWN Fact Sheet

## TRUGREEN

L-32

### FIRE ANTS

Fire ants build nests in lawns, pastures, and other sunny areas. Fire ants get their name from the painful stings they inflict. Fire ants were introduced from South America into Mobile, Alabama in 1918. Since that time, they have spread as far west as Texas, and as far north as southern Virginia.

#### Damage

Fire ants are capable of biting and stinging, and will do so with little provocation. It is the stings that are especially painful, and they frequently leave a raised, pimple-like lesion. The stings itch intensely and can cause allergic reactions in certain people allergic to bee stings. Fire ant mounds in lawns are a hazard to children, adults, and pets. Fire ants also have a tendency to build nests near utility boxes and electrical substations, where they can cause damage to wiring, transformers, and circuits.

#### Life Cycle

Fire ant colonies consist of a queen, workers, and winged reproductive forms (males and females). The queen can live for years and lay many thousands of eggs in her lifetime. The queen and eggs are tended by sterile females called workers. Workers gather food, enlarge the nest, and protect it from all intruders. The average colony has between 100,000 and 500,000 workers, and it is these workers that are responsible for the painful stings. When a colony becomes too large for a given area, winged reproductive forms are produced which then leave to mate and form a new colony.

Fire ants are relatively inactive during the winter months. During warmer months, foraging activity is usually greatest during the early morning and late afternoon, not during the heat of the day.

#### Control

Controlling fire ants on a site usually involves an ongoing effort. Once fire ant mounds are eliminated from a site, reinfestation occurs from surrounding areas.



There are generally two methods of controlling fire ants in turf areas; broadcast applications and mound treatments. Successful control with either method depends on killing the queen. Broadcast treatments usually consist of an application of a granular product. Some of the granular products are baits, which the ants gather during their foraging and feed to the queen. Mound treatments usually consist of mixing an insecticide in water and drenching the mound with sufficient solution to kill the queen or direct application of granular baits to active mounds. If the treatment does not kill the queen, the workers will usually move the queen and start a new colony within a few feet of the old mound.

Newer control products control the colony by sterilizing the queen. Timing of application is critical for maximum effectiveness. These newer materials take longer to eliminate the ant colony. Allow two weeks for control. These new controls will suppress reinfestation for up to one year.



# Stonehedge Calendar

# July 2017

Sun	Mon	Tue	Wed	Thu	Fri	Sat
-----	-----	-----	-----	-----	-----	-----

						 <span style="font-size: 8px;">1</span>
2	3 2 - Men's Pool 6 - Men's Poker	4 1- Hand & Foot 1- Bridge <b>1- POT LUCK</b>	5 <b>8:30- Coffee</b> 2-Men's Pool 6:30 - Hand & Foot 6:30 - Bridge	6 1 - Hand & Foot 6 - Men's Poker	7 2 - Men's Pool 6:30 - Pinochle	8 <b>Private Party</b> <b>3 - 9 P.M.</b>
9	10 2 - Men's Pool 6 - Men's Poker	11 1- Hand & Foot 1- Bridge	12 <b>8:30- Coffee</b> 2-Men's Pool 6:30 - Hand & Foot 6:30 - Bridge	13 1 - Hand & Foot 6 - Men's Poker	14 2 - Men's Pool 6:30 - Pinochle	15
16	17 2 - Men's Pool 6 - Men's Poker	18 1- Hand & Foot 1- Bridge	19 <b>8:30- Coffee</b> 2-Men's Pool 6:30 - Hand & Foot 6:30 - Bridge	20 1 - Hand & Foot 6 - Men's Poker	21 2 - Men's Pool 6:30 - Pinochle	22
23	24 2 - Men's Pool 6 - Men's Poker	25 1- Hand & Foot 1- Bridge	26 <b>8:30- Coffee</b> 2-Men's Pool 6:30 - Hand & Foot 6:30 - Bridge	27 1 - Hand & Foot 6 - Men's Poker	28 2 - Men's Pool 6:30 - Pinochle	29
30 	31 2 - Men's Pool 6 - Men's Poker					